



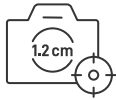
FJD Trion™ P2

LiDAR Scanner



SMALLER. SMARTER. SCAN MORE.

The next-generation FJD Trion P2 LiDAR Scanner combines groundbreaking portability with industrial-grade accuracy. Engineered for seamless field operations, it delivers centimeter-level precision, real-time colored point clouds, and multi-format deliverables—all in a compact 700g body. Whether mapping complex landscapes or capturing intricate details, the Trion P2 empowers professionals, surveyors, and 3D scanning enthusiasts to achieve more with less effort.



**1.2 cm
accuracy**



**70m
scanning range**



**< 1kg
Lightweight and Portable**



**4-Hour
Runtime**



**Real-Time
Colorization**



**Multi-SLAM
Algorithms**

UNCOMPROMISED POWER

700g Ultra-Lightweight



Triple Data Transfer

(Type-C/USB/Wireless Network)



Standard RTK Setup

**Three Built-In
Cameras**



Upgraded CPU

**High-Quality
Point Clouds**



**Wireless Network
Connection**

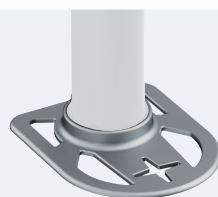
**Mobile Hotspot
Connection**



**4-Hour
Runtime**

**Dual-Battery
System**

*Standard 67W Type-C Fast Charging



**Metal Base for
Rugged Durability**

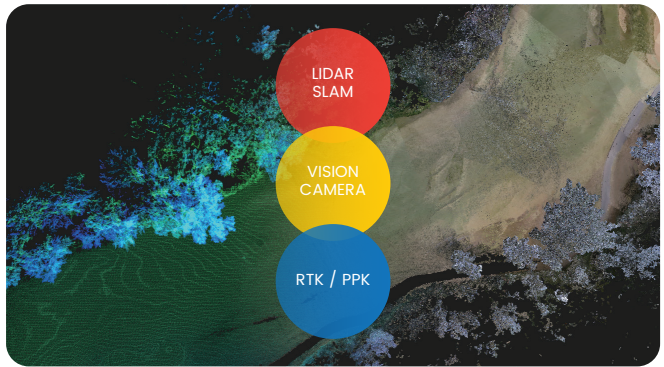
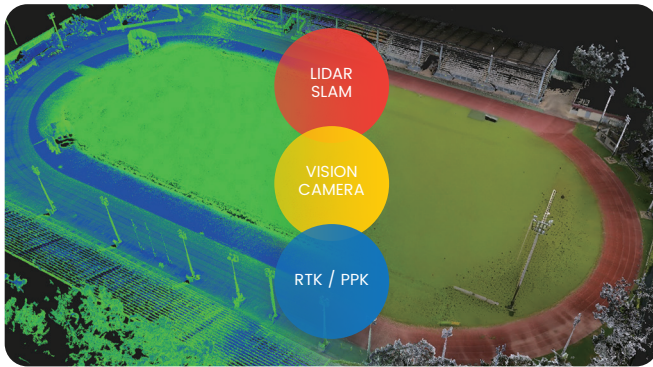


**Seamless Pole
Mounting**

5/8" Standard Interface

MULTISLAM FUSION, ROBUST PERFORMANCE

Eliminate drift with hybrid constraints, even in featureless areas like beaches, tunnels, and parks.

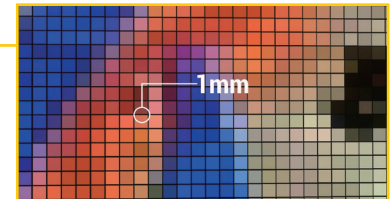


Original Point Cloud



HyperDense+

With the HyperDense+ feature in the FJD Trion Model, it delivers 5-7x denser clouds in a spacing of up to 1mm, giving you better colorization and overall quality.



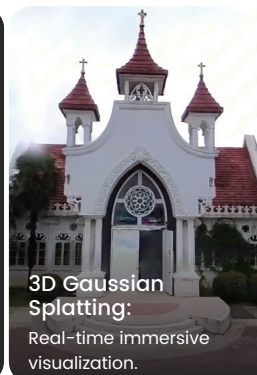
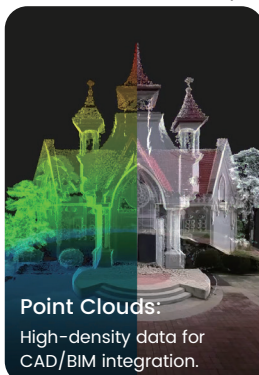
REAL-TIME TRUE-COLOR POINT CLOUDS

Enable real-time colorization and generation of high-quality point clouds through the upgraded CPU.



ONE SCAN, MULTIPLE DELIVERABLES

Maximize efficiency with multi-format deliverables from a single scan:

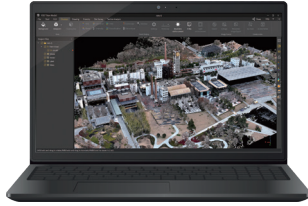


Seamless Integration into FJD Trion Software Ecosystem

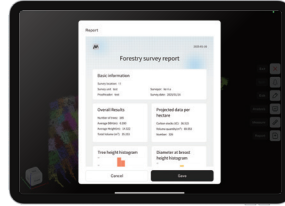
Streamline the workflow from point cloud capture, data processing, to deliverable sharing, giving you a smooth project experience.



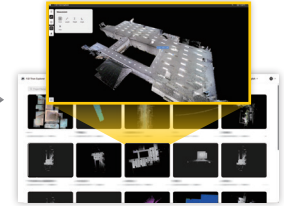
FJD Trion Scan
Data collection
Real-time app control
Scan file management



FJD Trion Model
Data processing
Generate construction, forestry,
mining reports, and more



FJD Trion Model for Tablets
Generate Deliverables
iPad and Android support
On-site post-processing and preview



FJD Trion Explorer
Share and collaborate
Share online and support
collaboration across teams.

SPECIFICATIONS

LiDAR

Speed	200,000 pts/s
FOV	360° x 59°
Range	40 m @ 10% reflectivity 70 m @ 80% reflectivity
Safety Level	Class I, eye safety
Hyperdense+	Support
Continue Scanning	Support

Built-in Camera

FOV (Front Camera)	70°
FOV (Side Camera)	280°x149°
Resolution (Front Camera)	2 MP
Resolution (Side Camera)	2 x 12 MP
Visual SLAM	Support
Image Export	Support
Image Format	.jpg

System Parameters

Dimensions	110×106×280 mm
Weight	700 g (excludes battery, external camera and RTK module) 1200 g (includes battery and RTK module) 1500 g (includes battery, external camera and RTK module)
Storage	512G (1TB expandable)
Operating Temperature	-20 C - 50 C
Storage Temperature	-40 C - 60 C
Ingress Protection	IP 54
Data Export	Wireless Network, USB Type-C, USB Flash Disk
Point Cloud Format	.las / .ply / .pts / .e57

Accuracy

Real-Time Point Cloud Accuracy	Relative: 2 cm; Absolute: 5 cm
Post-Processed Point Cloud Accuracy	Relative: 1.2 cm; Absolute: 3 cm

External Camera

Supported Models	Insta360 X3; Insta360 X5
360 Video Resolution (Insta360 X3)	F5.7K: 5760 x 2880 @ 30 / 25 / 24 fps
360 Video Resolution (Insta360 X5)	8K: 7680 x 3840 @ 30 / 25 / 24 fps

Electrical Specifications

Battery Life	4H (with 1 set of 2 batteries, include RTK module, exclude external camera) 3 H (with 1 set of 2 batteries, include RTK module and external camera)
Power Supply	DC Handheld Battery
Power Consumption	15 W (exclude external camera) 21 W (include external camera)
Charger	67W Fast Charging
Simultaneous Dual-Battery Charging	Support

GNSS

Satellite Constellation	BDS: B1I / B2I / B3I / B1C / B2a / B2b GPS: L1 C/A / L1C / L2P (Y) / L2C / L5 GLONASS: G1 / G2 / G3; Galileo: E1 / E5a / E5b / E6 QZSS: L1C/A / L1C / L2C / L5 (IRNSS and SBAS support by a firmware upgrade)
RTK Accuracy	H: 8 mm + 1 ppm RMS V: 15 mm + 1 ppm RMS
Positioning Rate	10 Hz
PPK	Support

Free Quote: sales.global@fjdynamics.com

Address: 15 SCOTTS ROAD #03-12, Singapore

[FJDynamics.com](https://www.fjdynamics.com)



CREATE FOR A BETTER WORLD

Copyright © FJDynamics. All rights reserved.